

Pupil Premium 3 Year Strategy – EEF TIERED MODEL

Templenessam Halton Primary School 2021-2024

1 Teaching

HIGH QUALITY TEACHING

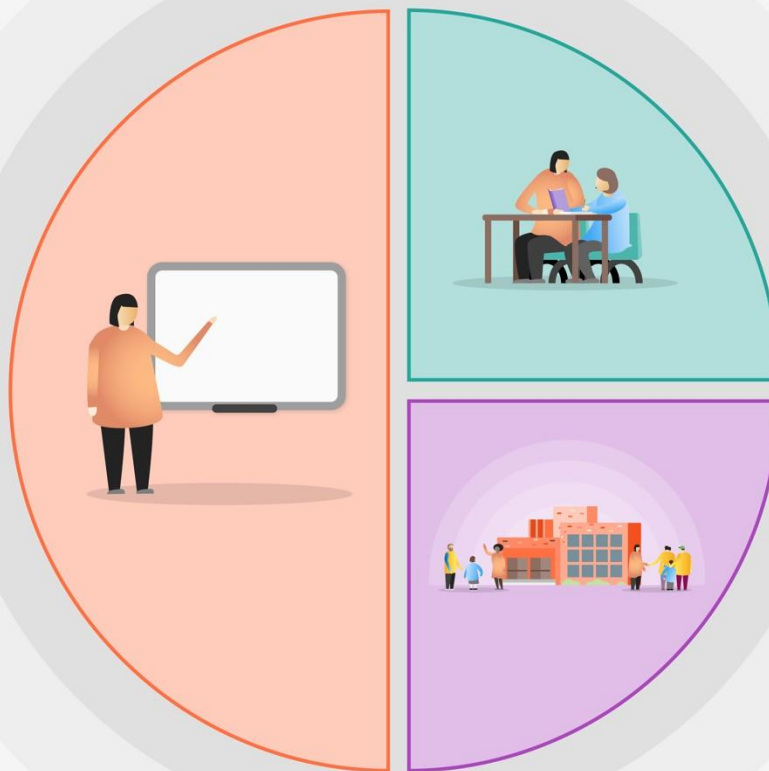
- Ensure all teachers are confident in the teaching and assessment of writing
- Develop whole school oracy/storytelling strategies to encourage language
- Subject Leaders to have dedicated release time across the year.
- SLT monitoring of teaching and learning.
- RKLT Network Meetings -sharing best practice.
- Impact Conversations – progress review meetings between Assistant Head, SENDCo & teachers
- Early Career Teachers and new-to-school teachers/staff inducted by SLT and Experienced Mentor.

ENGLISH

- Whole school phonic, reading and writing approach to be embedded.
- Teachers moderating -across the Trust and teaching Teams.
- Phonics Tracker & data Tracker -linked to Provision Mapper.

MATHS

- Further develop Maths Mastery approach from EYFS to Year 6. Curriculum re-organised & sharpened by Maths Leader.
- Pedagogy CPD for all staff by maths leader using Maths Hub materials & advice.



2 Targeted academic support

ENGLISH

- Little Wandle (Reading and Phonics)
- Catch up and Keep up (Little Wandle)
- NELI
- Talking House

MATHS

- Numicon Interventions
- NCETM and White Rose
- Third Space Learning Tutoring

In class TA & Teacher support

Pre & post teaching support to provide instant fixes before the learning gap grows also booster classes.

3 Wider strategies

PERSONAL DEVELOPMENT

- Whole school training on behavior management
- Implement new PSHCE scheme- Jigsaw and support teaching and learning of all pupils
- Increase number of E-safety lessons for all pupils.
- Raise awareness of Online safety for all parents.

EMOTIONAL WELLBEING

- Family engagement in school
- Increase the school's mental health offer by offering whole school mental health curriculum and additional time from Learning Mentors.

ATTENDANCE

- Daily response to attendance with a dedicated staff member to follow up concerns immediately.
- Learning Mentor -further time to support Pupil Well-being & SEMH.