



TEMPLENEWSAM

Halton Primary School

Information for Parents and Carers Booklet



"Play is the highest form of research"
Albert Einstein.

Meet the Team

Senior Leadership Team



Ian Weatherley
Deputy Head



Lisa Seton
Headteacher



Laura Lightfoot
Assistant Headteacher

EYFS Lead



Victoria Moxon
Classroom Teacher

Nursery Team



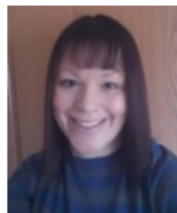
Holly Clough
Classroom Teacher



Marie Bennett
Learning Support Assistant



Victoria Frosdick
Learning Support Assistant



Laura Lightfoot
Assistant Headteacher

Welcome to Templenewsam Halton Early Years Foundation Stage (EYFS). This is how the Government and Early Years' practitioners describe the time in your child's life between birth and age 5.

At Templenewsam Halton we aim to provide an ambitious and exciting curriculum which is designed in a sequential way to ensure progress is made towards our end of year curricular goals.

We are proud of our friendly and caring school community where all our children are supported to aim high and achieve their very best.

Our curriculum engages all learners and equips them with the knowledge and skills to tackle an ever-changing world. It meets all the requirements of the educational programmes in the statutory framework for the Early Years Foundation Stage (EYFS) and has the flexibility to allow us to respond quickly to children's new interests and/or needs.



The Seven Areas of Learning

Your child will be learning skills, acquiring new knowledge and demonstrating their understanding through 7 interconnected areas of learning and development.

Children should mostly develop the 3 prime areas first. These are:

PERSONAL, SOCIAL AND
EMOTIONAL DEVELOPMENT
COMMUNICATION AND LANGUAGE
PHYSICAL DEVELOPMENT

These prime areas are those most essential for your child's healthy development and future learning. As children grow, the prime areas will help them to develop skills in 4 specific areas. These are:

MATHEMATICS
LITERACY
UNDERSTANDING THE WORLD
EXPRESSIVE ARTS AND DESIGN

These 7 areas are used to plan your child's learning and activities. At TNHPS our experienced EYFS teaching team ensure that tasks and challenges are suited to your child's unique needs and interests. Children in the EYFS learn by playing and exploring, being active, and through creative and critical thinking. Our environment indoors and outdoors is continually enhanced with resources designed to scaffold and maximise learning.

Our School Values

Our school prides itself upon three key words:

Respectful

Our children are kind and caring individuals who express themselves in a meaningful way. They manage their behaviour positively within the classroom and in social situations.

Motivated

Our children lead their own learning which encourages confidence and high levels of engagement. They take risks, explore new ideas, problem solve, make links to learning and thrive on challenge. Real learning opportunities are at the heart of our teaching.

Safe

Our children understand that their classroom is key to promoting their curiosity and freedom to learn. We nurture our children providing endless opportunities for our children to make learning choices and to develop their own skills and knowledge.



Nursery 2023

Timings of the Day

Please check your child's key dates and start times letter for when your child starts school as the times and dates may vary

In the morning, Nursery doors will open at 8:40am to allow for a staggered start to the day. Doors will close at 8.50am. All children must be in Nursery by 9:00am as this is when the morning session starts. Any child arriving after this time will be marked as late and must go to the school office to sign in.

School Day- 8:40am to 3:15pm

Wednesday am pick up - 11:45am / Wednesday pm drop off- 1pm

Lunchtime will be between 12pm and 1pm

Lunchtimes

Nursery lunchtimes are held in our Nursery dining area and are staffed by adults who are familiar to the children.

At lunchtime, the children are able to have a school meal with is provided at a charge of £2.15. These school lunches consist of either dinner of the day, including a vegetarian option, a jacket potato or a sandwich and a pudding.

The school meal options run on a three week rolling menu.

Food allergies can also be catered for. Please speak to a member of the school office who can help you further with this.

Children may also bring a packed lunch from home.

Snack

Children in Nursery can order milk to drink daily and they will be given a piece of fruit each day. We have a set snack time and all the children are encouraged to try the fruit or snack on offer.

Please send in a named drinks bottle so that your child can have a drink throughout the day.

After each day you must collect your child's water bottle, clean it and bring it back full the following day.

School Uniform

School uniform is worn by all our pupils. SPT in Garforth supply our named uniform. Please call them on 0113 232 0111 to find out more.

The uniform in Nursery will be:

Plain Royal blue or white polo shirt

Royal blue cardigan or jumper (school logo optional)

Grey bottoms- This can be elasticated trousers, leggings or skirts.

Black shoes/ Plain Black Trainers - recommend no laces

Wellington Boots

Waterproofs

This is the link to order your school uniform:

<https://www.sptuniforms.co.uk/>



How can I help at home?

Building positive relationships with the families of Templenewsam Halton, between children, parents and practitioners begins in the Early Years. We understand that when parents trust us in the care and teaching of their child to the staff in our setting it is a big step. We pride ourselves on creating an environment that is warm and welcoming. Each day leads to a deeper knowledge and understanding of each child and their family.

All the fun activities that you do with your child at home are important in supporting their learning and development, and have a really long lasting effect on your child's learning as they progress through school. You are your child's first educators and we greatly value any input, opinions and information you can share with us about your child. Working together as partners will set the scene for your child to thrive at TNHPS.



Health and Self Care- Toileting

As children enter Nursery, we would expect them to be toilet trained.

We do understand that accidents happen, particularly when children are engrossed in their play and we are more than happy to change children after an accident.

Please ensure that your child brings in a bag with spare clothes, including socks and shoes.

We recommend that your child wears clothes that don't hinder their ability to use the toilet independently for example tricky buttons on trousers and tights can be hard to get down in time and can lead to children getting upset when accidents happen!

In Nursery, our toilets and sinks are small and steps are available if required. Children do not need to ask to go to the toilet and can go at any time.

In your welcome pack is a leaflet from Leeds Community Healthcare that provides hints and tips for getting your child toilet trained. Your health visitor will also be able to provide support.



How we communicate with you

We provide many opportunities for parents and carers to take an active part in their child's education and find out how your child is getting on.

These include:

Tapestry online learning journal

This provides parents/carers with real time access to observations teachers have taken in class.

Parent Consultations - in the Autumn and Spring term, you will be invited to discuss your child's progress. A summary of their development will be discussed with you and how you can support their learning at home.

Throughout the year we also have 'open classrooms', an opportunity to see your child's classroom environment and work they would like to share.

A small written report will come home towards the end of each term and opportunities are given for you to come in and discuss this with the class teacher.

Throughout your time at TNHPS, you can find information on current learning on our Nursery class webpage, and a weekly headteacher newsletter will be emailed to you containing school news.



How you communicate with us

You can communicate with us by:

To share concerns/questions relating to learning and behaviour:

Sending a message via Tapestry online learning journal

Email: eyfs@tnhps.rklt.co.uk

Telephone: 0113 2930314 and ask to speak to Mrs. Moxon or Mrs. Lightfoot

Any small queries or questions can be answered your child's class teacher between 3pm and 3:15pm.

Key Phone numbers and email addresses

School Telephone: [0113 2930314](tel:01132930314) – General queries including leaving a message to report absences

info@tnhps.rklt.co.uk - General Queries (advising collection arrangements, dinner choices, appointments, etc) - (Monitored throughout the day)

Queries relating to children's learning/behaviour or share concerns – eyfs@tnhps.rklt.co.uk

(Monitored by Phase Leader, Mrs Moxon, before and after school)

Queries regarding children's wellbeing/safeguarding:

pastoral@tnhps.rklt.co.uk

(Monitored various times throughout day)

Special Educational Need queries – SEND@tnhps.rklt.co.uk

(Monitored throughout the day Monday to Wednesday)



Thank you for choosing
Templenewsam Halton for your
child's educational journey.

Please feel free to contact us anytime
on 0113 293 0314

or

info@tnhps.rklt.co.uk /
eyfs@tnhps.rklt.co.uk

